



Phone: 916.683.7111
Fax: 916.691.3168

Web: www.elkgrovecity.org

8401 Laguna Palms Way
Elk Grove, California 95758

Standards Update Transmittal

Reference Number: **2021-03**
Standards: **Standard Drawings, SD-13**

Update:

1. Standard Drawings:
 - a. SD- 13 DROP INLET TYPE C: revise to 18" from 30" on Type 2 Curb Section A-A and 30" from 18" on Section B-B

Red line DWG and updated DWG are attached.

Effect of Update:

1. Correct the dimension typo on the drawing.

Request for Update Initiated By: **Bob Tingley** 6/08/20

Update Reviewed for Conformity and Consistency to Standards:

Jeff Werner

2/18/2021 | 10:08 AM PST

Jeff Werner, P.E., ESD Manager

Date

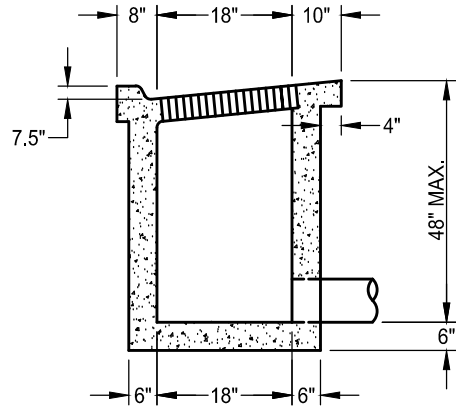
Update to Standards Approved:

Bob Murdoch

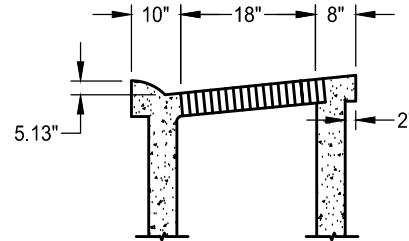
2/18/2021 | 10:44 AM PST

Robert Murdoch, P.E., City Engineer

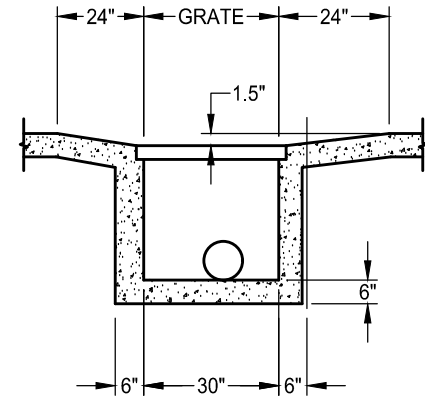
Date



TYPE 2 CURB

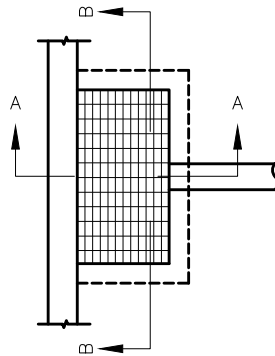


TYPE 1A CURB



SECTION B-B

SECTION A-A



NOTES

1. STANDARD DEPRESSION FOR INLET IS 1-1/2".
2. FRAME AND GRATE SHALL CONFORM TO STANDARD DRAWINGS SD-14 AND SD-15.
3. OPEN-BACK HOOD SHALL BE H-20 RATED.
4. ALL EXPOSED EDGES SHALL HAVE A 1/8" R (MINIMUM).
5. AN EDGING TOOL SHALL BE USED ON ALL EDGES WHERE THE CONCRETE SIDEWALK AND CURB MEET THE TOP OF THE HOOD.
6. ALL EXPOSED PARTS TO BE HOT DIP GALVANIZED PER ASTM A123, AFTER FABRICATION.

DATE 09/22/2007		NOT TO SCALE	
REVISION	BY	APPROVED	DATE
01	BT	JRW	02/16/2021

CITY OF ELK GROVE - PUBLIC WORKS

**DROP INLET
TYPE C**

APPROVED BY:

Paul M. Mudgett

02/17/2021

CITY ENGINEER

DATE



DRAWING NUMBER

SD - 13